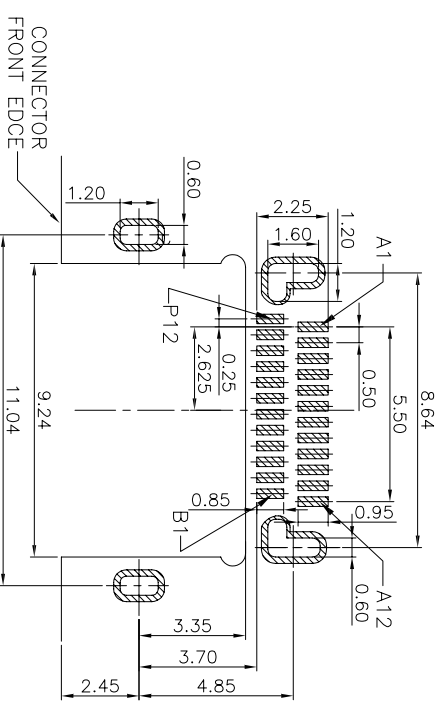
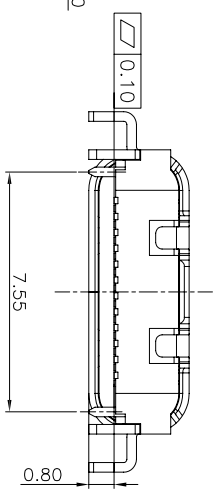
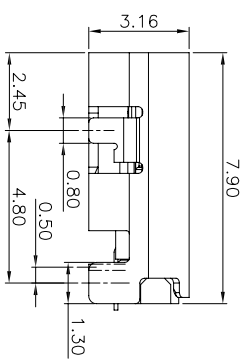
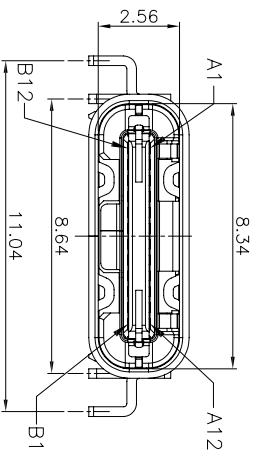
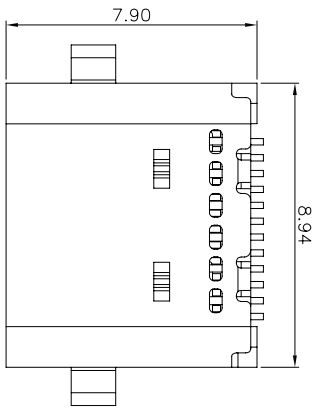
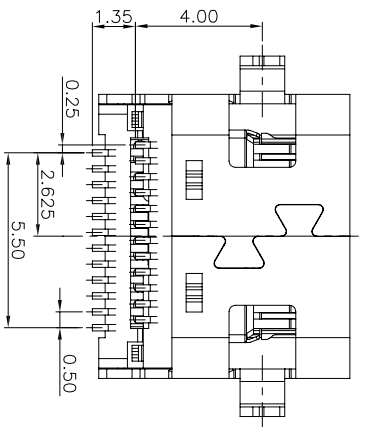


REV. A	DATE 2015/07/04	ECN NO. /	MODIFICATION NEW	APPROVER Vicky
--------	-----------------	-----------	------------------	----------------



RECOMMENDED P.C.B. LAYOUT
TOLERANCE UNSPECIFIED ±0.05mm



- NOTES:
SPECIFICATION:
1. CURRENT RATING: 1.5A MAX
 2. VOLTAGE: 100 VAC
 3. TEMPERATURE RANGE: -30 °C ~ 85 °C
 4. CONTACT RESISTANCE: 40 MILLIONHM MAX
 5. INSULATION RESISTANCE: 100 MEGOHMS MIN.
 6. INSERTION FORCE : 5N~20N
 7. UNMATING FORCE: 8N~20N
 8. DURABILITY: 10,000 CYCLES

NO.	DESCRIPTION	MATERIAL	REMARKS	QTY
1	HOUSING	HIGH TEMPERATURE PLASTIC	BLACK	1PCS
2	CONTACT	COPPER ALLOY	Au/Ni Plated	1SET
3	SHIELDING PLATE	STAINLESS STEEL		1PCS
4	SPRING	STAINLESS STEEL		1PCS
5	SHELL	STAINLESS STEEL	Ni/SN Plated	1PCS

PIN	SIGNAL NAME	PIN	SIGNAL NAME
A1	GND	B12	GND
A2	SSTXP1	B11	SSRXP1
A3	SSTXM1	B10	SSRXM1
A4	VBUS	B9	VBUS
A5	CC1	B8	SBU2
A6	DP1	B7	DN2
A7	DN1	B6	DP2
A8	SBU1	B5	CC2
A9	VBUS	B4	VBUS
A10	SSRXN2	B3	SSTXN2
A11	SSRXP2	B2	SSTXP2
A12	GND	B1	GND

GENERAL TOLERANCE	UNITS mm	MAT'L
SELECT	✓	
TOL	1	2
ON	1	2
X.XXX	±0.08	±0.15
X.XX	±0.13	±0.25
X.X	±0.30	±0.25
X.	±0.38	±1.00
ANGLE	±2°	

NAME: USB	PART NO: USB624FC-C2051200	TITLE: USB 3.1 24P FEMALE SMT C TYPE
APPD: Vicky	CHKD: Doris	沉板0.8 外壳四脚插板
DR: Jillian	DWG NO: ATOM-A02960	SCALE: 1:1
		SHEET: 1/1
		REV: A