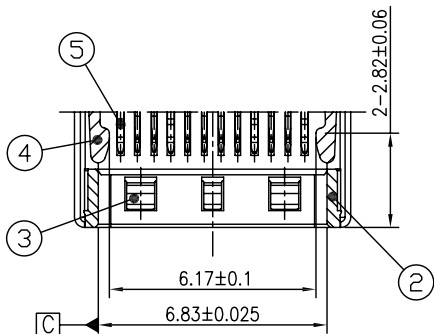
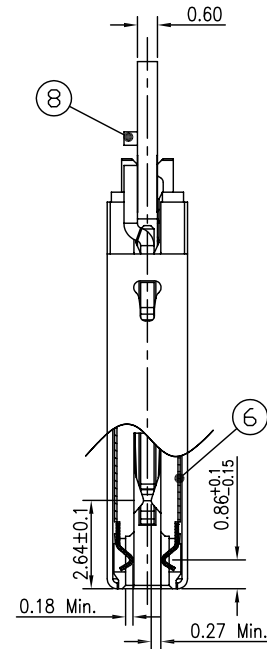
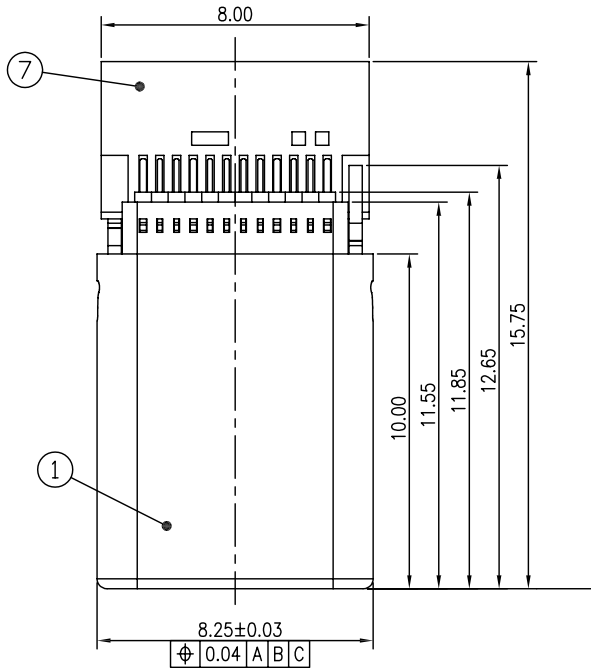
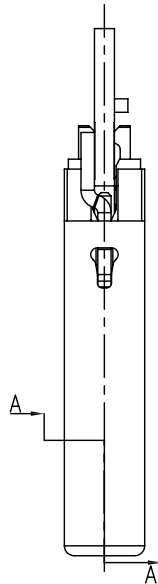
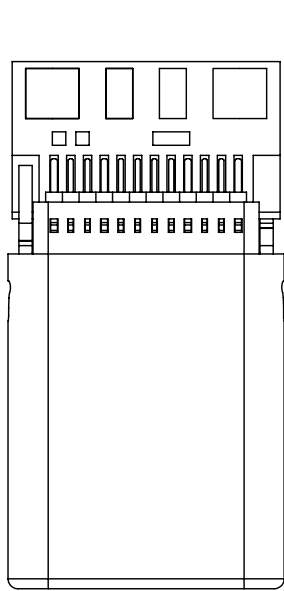
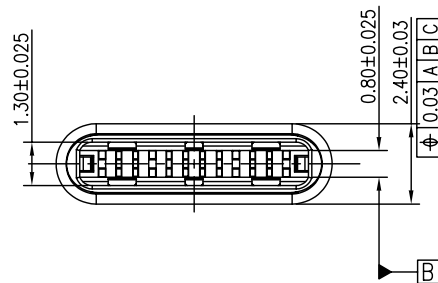


REV.	DATE	ECN NO.	MODIFICATION	APPROVER
A	2016/08/23	/	NEW	Vicky



Section A-A



NOTE:

- 1.ELECTRICAL CHARACTERISTICS;
 - 1.1 Contact resistance:40mΩ max.
 - 1.2 Dielectric withstanding voltage:100V AC.
 - 1.3 Insulation resistance: 100MΩ min.
 - 1.4 Operating temperature:-45°C~+85°C.
- 2.MECHANICAL CHARACTERISTICS:
 - 2.1 Insertion force:5~20N.
 - 2.2 Extraction force:8~20N.
 - 2.3 Durability mandatory:10000 cycles.

8	Resistance	1	0402 10KΩ ±1 1/16W
7	PCB	1	FR-4, Green solder liquid photosensitive ink, white text
6	Mylar	2	KP006-D
5	TML	12	Copper Alloy, Au plated on contact area, and plated Au on solder tail, plated Ni all over
4	Lock Spring	1	Stainless Steel, Ni plated all over
3	EMC Spring	2	Stainless Steel, Ni plated all over
2	HSG	1	Hi-Temp Plastic, Black, UL 94V-0
1	Shell	1	Stainless Steel, Ni 50u" all over
No.	Part Name	Q'ty	Description

GENERAL TOLERANCE			UNITS	mm	NAME: USB				
SELECT	✓		MAT'L	PART NO: USB624MC-E2021403	TITLE: USB 3.1 24P MALE C TYPE 夹板式				
TOL.	1	2			3	APPD: Jason	DWG NO. ATOM-A03441		
ON.	±0.03	±0.05	±0.15	FINISH	CHKD: Vicky		SCALE	SHEET	REV
X.XXX	±0.05	±0.13	±0.25	Q'TY	DR: CmY		1:1	1/1	A
X.XX	±0.10	±0.25	±0.50						
X.X	±0.20	±0.38	±1.00						
ANGLE	±2'								