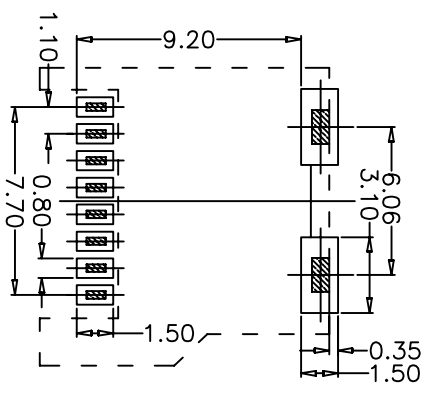
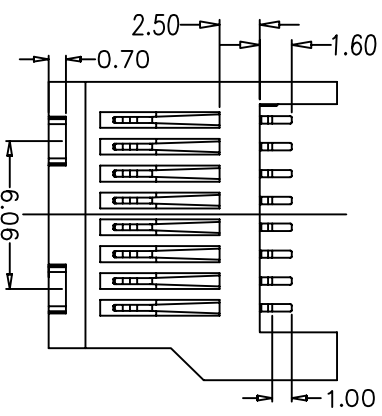
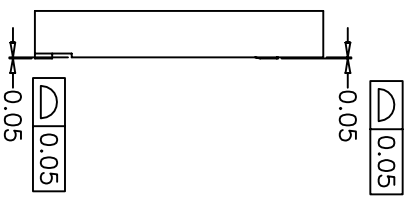
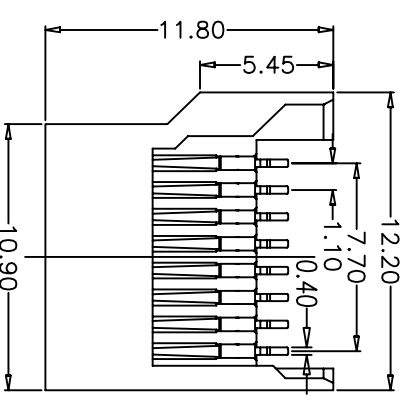
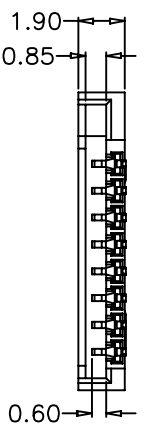


REV. A	DATE 2014/03/20	ECN NO. /	MODIFICATION NEW	APPROVER Vicky
--------	-----------------	-----------	------------------	----------------

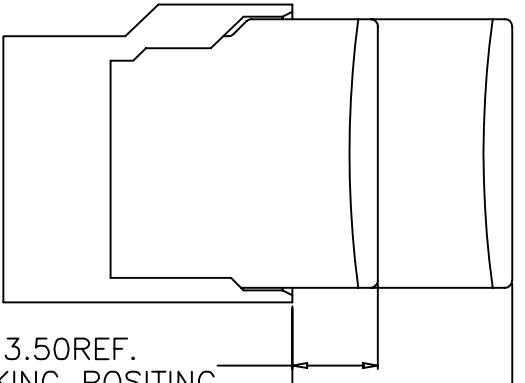


RECOMMENDED P.C.B HOLE LAYOUT
 COMPONENT SIDE VIEW(TOLERANCE: +/-0.05)

- Remarks:
- Material:
 - Housing: LCP UL94V-0
 - Terminal: phosphor bronze C5191
 - Grounding strip: phosphor bronze C5191
 - Main Performance:
 - Rating voltage: 2V~3.6V
 - Contact resistance: 100mΩ MAX
 - Insulation resistance: 100MΩ MIN 500V DC
 - Voltage withstanding test: 200V
 - Mechanical performance
 - Mating force: 4.0Kgf MAX
 - Un-mating force: 0.1Kgf MIN
 - Life: 5000 cycles
 - Environmental performance
 - Solderability: temperature 230±5°C, time 30~60s
 temperature 260±5°C, time 10s
 - Operating environment:
 temperature: -20°C~+85°C

3.50 REF.
 WORKING POSITING

9.00 REF.
 INSERT POSITION



GENERAL TOLERANCE			UNITS mm		
SELECT	1	2	3	MAT'L	Q'TY
ON/TOL	1	2	3	FINISH	
X.XXX	±0.15	±0.08	±0.15		
X.XX	±0.20	±0.13	±0.25		
X.X	±0.25	±0.25	±0.50		
X.	±0.38	±0.38	±1.00		
ANGLE	±2°				

Pin No.	NAME	TYPE	DESCRIPTION
1	DAT 2	I/O/PP	Date Line(bit2)
2	CD/DAT 3	I/O/PP	Card Detect/Date Line(bit3)
3	CMD	PP	Command Response
4	VDD	S	Supply Voltage
5	CLK	I	Colck
6	VSS	S	Supply Voltage Ground
7	DAT0	I/O/PP	Date Line(bit0)
8	DAT1	I/O/PP	Date Line(bit1)

NAME: 卡座

PART NO: MR07C-06200

APPD: Vicky

CHKD: Emilia

DR: deng

TITLE: MICRO SD CARD 简易型全塑

DWG NO: ATOM-A02096

SCALE: 1:1

SHEET: 1/1

REV: A

